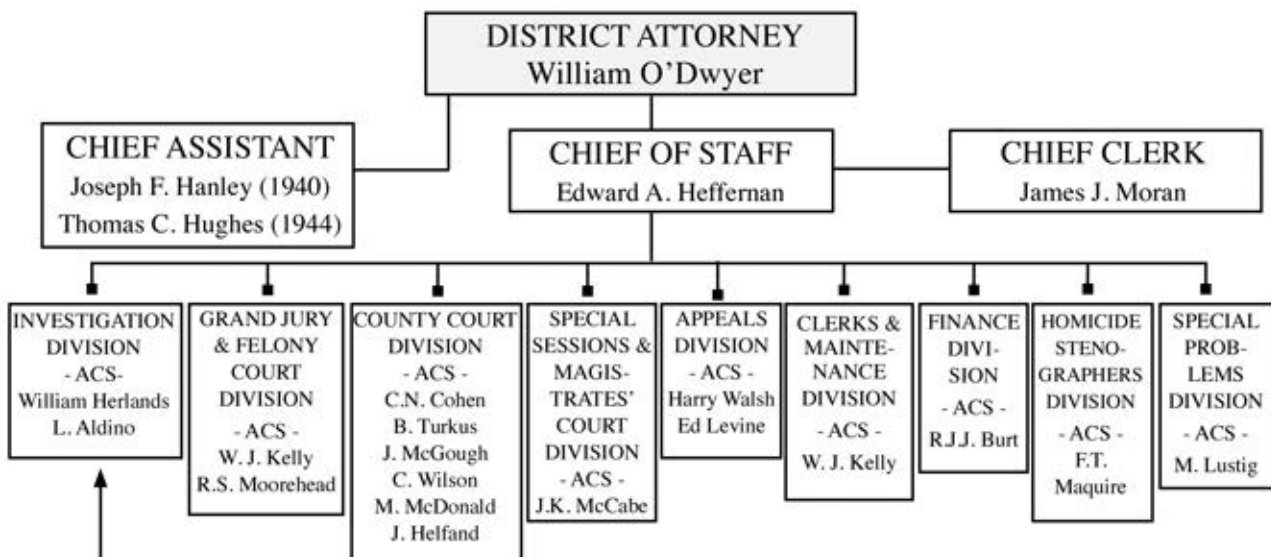


Organizational Chart of the Brooklyn District Attorney's Office - Kings County

Select List of Positions 1941-1945



Key NYPD Police

POLICE COMMISSIONER

Lewis J. Valentine, 1934 – 1945
Arthur W. Wallander, 1945–1949

SELECT OFFICERS NAMED IN AMEN INVESTIGATION

Louis Costuma Chief Inspector
 William T. Reynolds Deputy Chief Inspector, Brooklyn West (1941)
 Michael A. Wall Deputy Chief Inspector, Brooklyn East (1941)
 John J. McGowan Deputy Chief, Homicide (1936, 1940 – 46)
 Harry Lobdell Deputy Chief Inspector of Detectives, 11th Division
 John J. Ryan Asst. Chief Inspector
 Howard O'Leary Captain (Abe's investigation under Reynolds)
 Abraham Brody Captain, Coney Island Station (Fox case)
 James McNally Captain (Malinski/Fox cases)
 Cuthbert Behan Lieutenant, Prospect Park Station & Canarsie
 Robert Bowe Detective, Brooklyn Homicide Squad (Beitler Death)
 Hyman Levine Detective, Manhattan (Beitler Death)
 Charles Celano Detective, Homicide Squad (Reles/Malinski cases)
 William Cush Detective (Reles Death)
 Frank Sarcona Detective (Abe's Murder, Druckman Case)
 Francis Carney Patrolman, 10th Division (Raid on Abe's Headquarters)
 Edward McGowan Patrolman, 71st precinct (Beitler Death, Abe's Murder)

Chief Harry Lobdell
 Charles Jeffrey
 Lt. Cuthbert Behan
 Robert E. Connor
 John E. Kelly
 James Sweeney
 Francis Carney
 Lawrence Bein
 Harry McDonald
 Patrick Connolly
 John Sweeney
 Harry McDonald

DA'S SPECIAL INVESTIGATION SQUAD (1940-1945)

Captain Frank Bals
 Lt. Maurice Gaughran
Reles Detail:
 Sgt. Elwood Divvers
 Det. Victor Robbins
 Det. James Boyle
 Det. John E. Moran
 Det. Harvey McLaughlin
 Det. Francesco Tempone
Malinski Case:
 Capt. James McNally
 Det. James A. Bell, Jr.